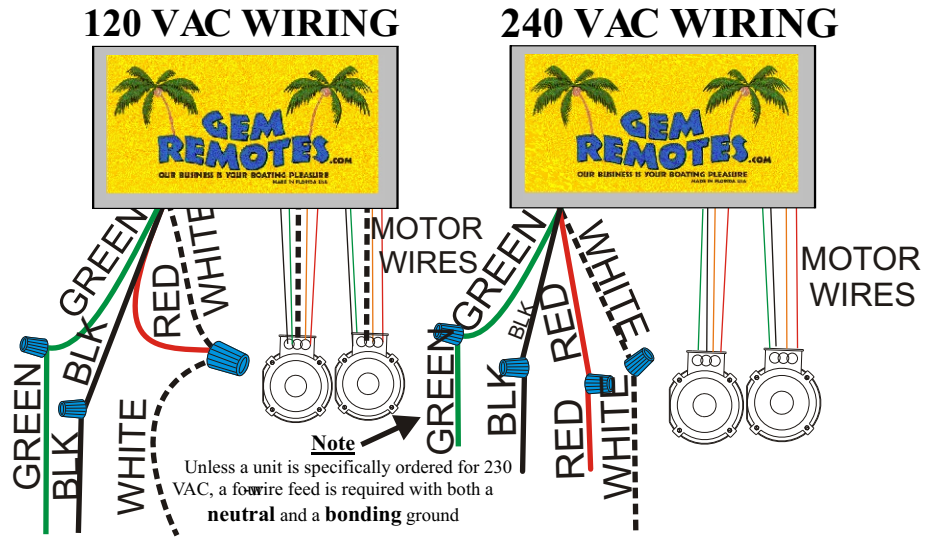


Replacement transformer Main Voltage hook up with four wires (three wires + ground)

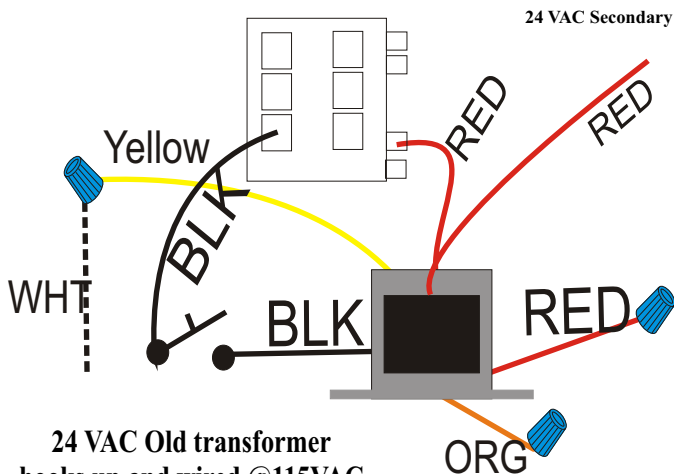
6/17/08



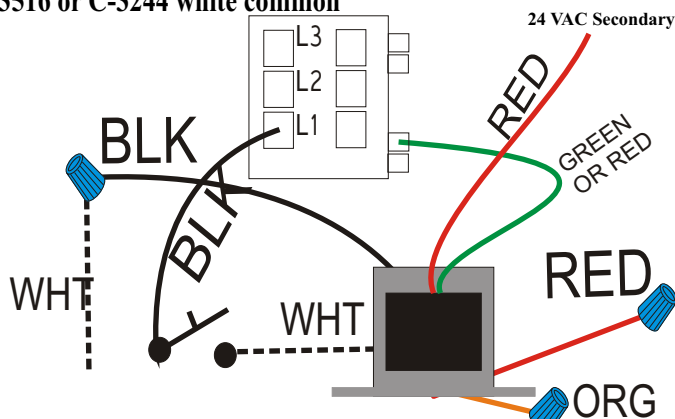
A neutral (120VAC) is needed for a GFIC

115 and 230 VAC wiring
with a neutral using a
New transformer 3516-3

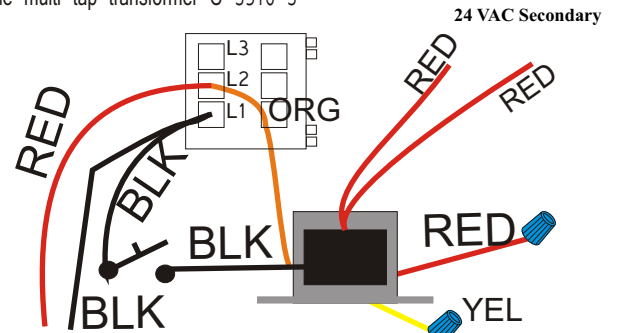
240 Volts only hook up using
only three wires (2+G) Not using
Neutral (White). You must rewire
the multi tap transformer C-3516-3



24 VAC Old transformer
hooks up and wired @115VAC
C-3516 or C-3244 white common



Our unit needs a min. 20VA 28vac out put.
Radio Shack has a 120 to 24 vac #2731512
Ace Hardware door chime transformer 36485 120 to 24vac - 20va



24 VAC Old transformer hook up
wired @230 VAC and no neutral
C-3516 or C-3244 white common

